

QuMax for RUT2xx

Integrated outdoor multi band high power LTE directional antenna + outdoor Wi-Fi omni antenna + place to install Teltonika RUT260/RUT241/RUT240/RUT200/RUT230 (All-in-one)

QuMAX offers the most powerful directional LTE antenna of all QuWireless antennas. It is dedicated to connections with long distance to base station. It is designed to have Teltonika **RUT260, RUT241, RUT240, RUT230** or **RUT200** router installed inside IP67 enclosure. It is the first choice for fixed installations in industrial environment. **It has embedded also outdoor Wi-Fi omni antennas.**

NOTE: For RUT230 one LTE antenna is unplugged.

4G
LTE


Wi Fi 2.4GHz


694-2700MHz


6 dBi


DIRECTIONAL


IP 67


-40° TO +80°



OUTDOOR ANTENNA WORKS IN **ANY**
WEATHER CONDITIONS, IP67



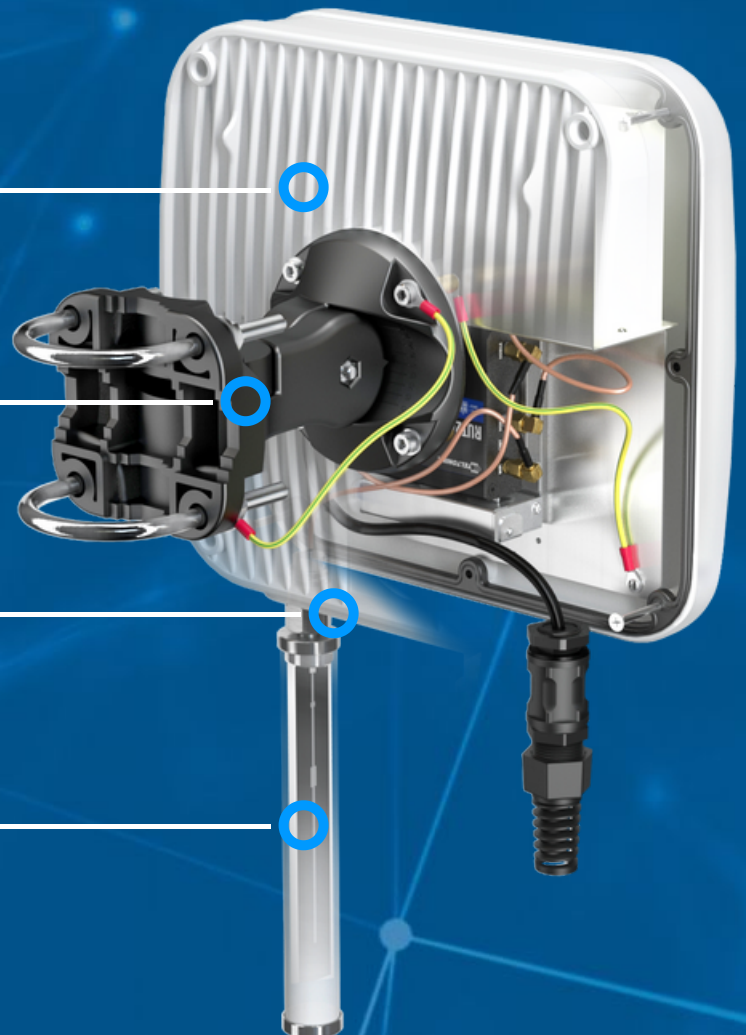
ANTENNA **PERFECTLY MATCHED** WITH
THE ROUTER



PASSIVE POE SUPPORT



MADE IN **EUROPE**



LTE ANTENNA SPECIFICATION

FREQUENCY	694 - 960 MHz 1.7 - 2.2 GHz 2.2 - 2.7 GHz
SUPPORTED LTE/5G BANDS	1, 2, 3, 4, 5, 7, 8, 9, 10, 12, 13, 14, 17, 18, 19, 20, 25, 26, 27, 28, 29, 30, 33, 34, 35, 36, 37, 38, 39, 40, 41, 44, 53, 65, 66, 67, 68, 69, 85, 103, n80, n81, n82, n83, n84, n85, n89, n90, n95, n97, n98, n100, n101, n256
GAIN	694 - 960 MHz : 4 dBi 1.7 - 2.2 GHz : 5 dBi 2.2 - 2.7 GHz : 6 dBi
VSWR	<1.30, max <1.8
BEAMWIDTH	90°/90° ±30°
POLARIZATION	Vertical
IMPEDANCE	50 Ω

WI-FI ANTENNA SPECIFICATION

FREQUENCY	2.4 - 2.5 GHz
GAIN	6 dBi
VSWR	<1.70, max <2.00
BEAMWIDTH	360°/25° ±5°
POLARIZATION	Vertical
IMPEDANCE	50 Ω

MECHANICAL SPECIFICATION

MATERIALS	ABS, aluminum, PTFE, Fiberglass
CONNECTOR TYPE	RJ45 + Nf + Nm in external omni Wi-Fi antenna
INGRESS PROTECTION	IP67
DIMENSIONS	272 x 276 x 96 mm 10.71 x 10.87 x 3.78 inch
WEIGHT	1.8 kg 3.97 lbs
OPERATING TEMPERATURE	From -40°C to 80°C From -40°F to 176°F
MAST DIAMETER	25-60mm 0.98-2.36 inch

FREQUENCY BANDS

LTE / 4G GSM	5	8	12	13	14	17	18	694 MHz	960 MHz
	19	20	26	27	28	29	44		
	67	68	85	103	n81	n82	n83		
	n89	n100							
LTE / 4G UMTS	1	2	3	4	9	10	25	1710 MHz	2170 MHz
	33	34	35	36	37	39	n80		
	n84	n86	n95	n98	n101				

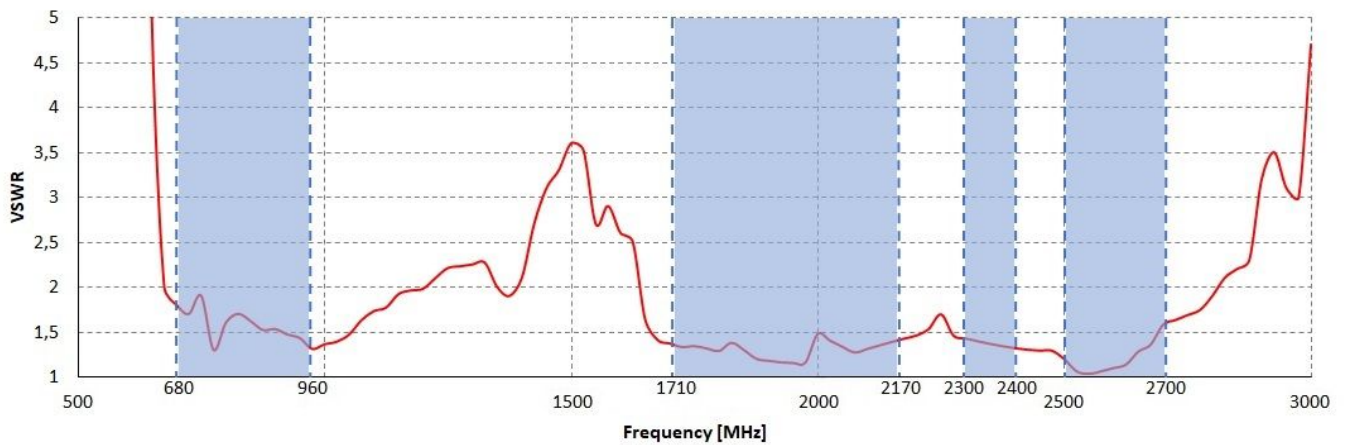
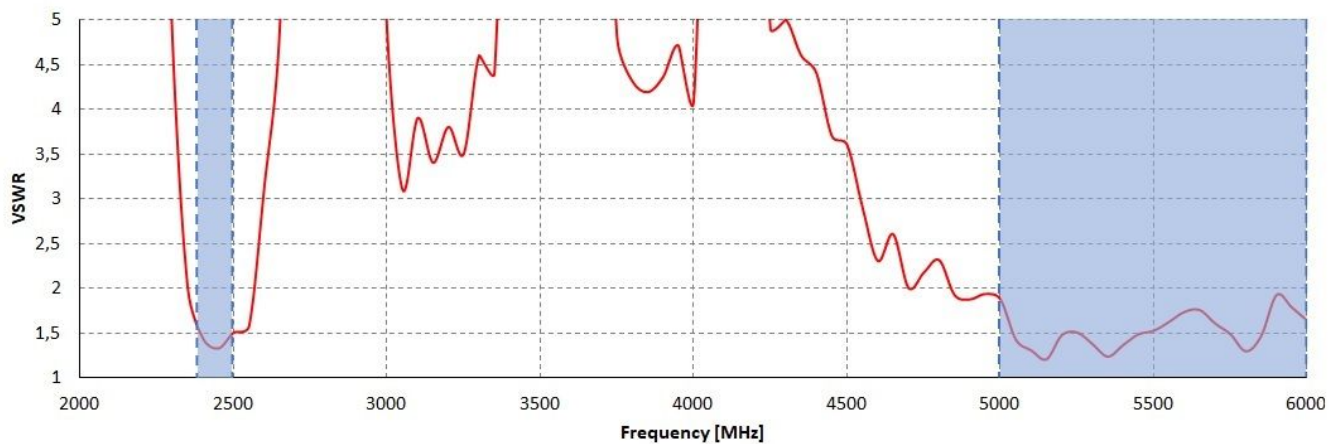
LTE / 4G WCS DARS

 2300 MHz 2400 MHz

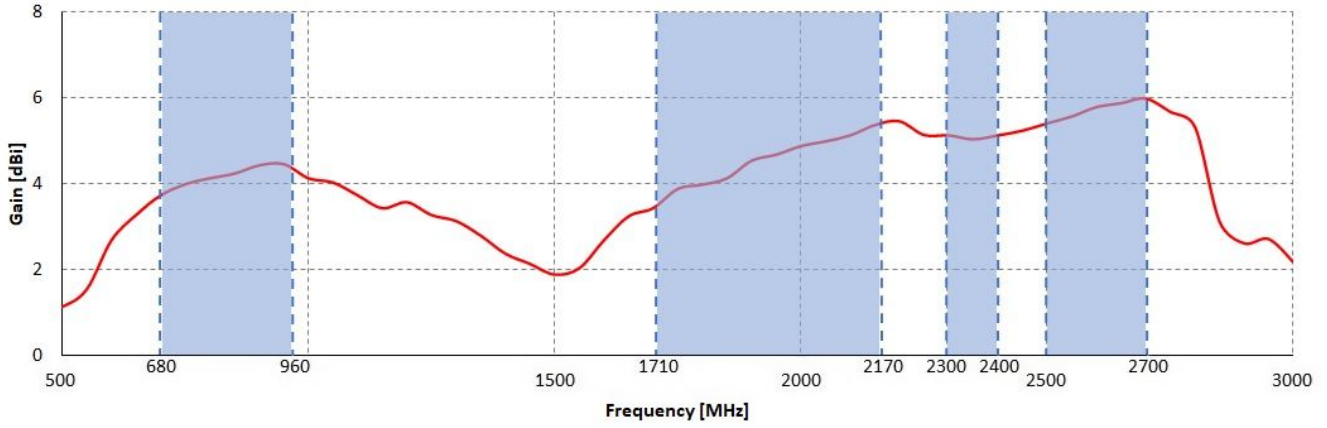
LTE / 4G

 2400 MHz 2700 MHz

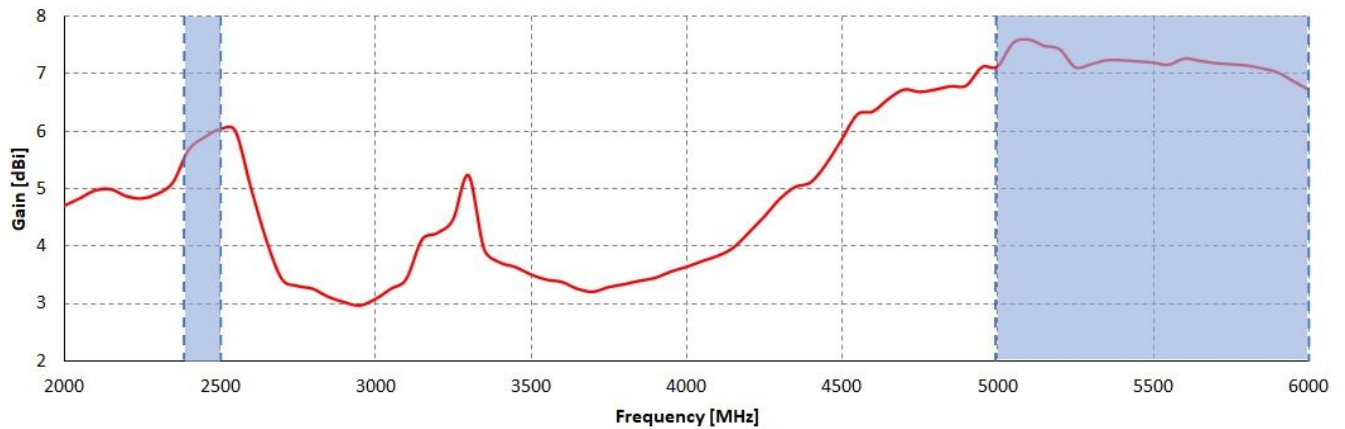
PLOTS

 VSWR for LTE antenna

 VSWR for Wi-Fi antenna


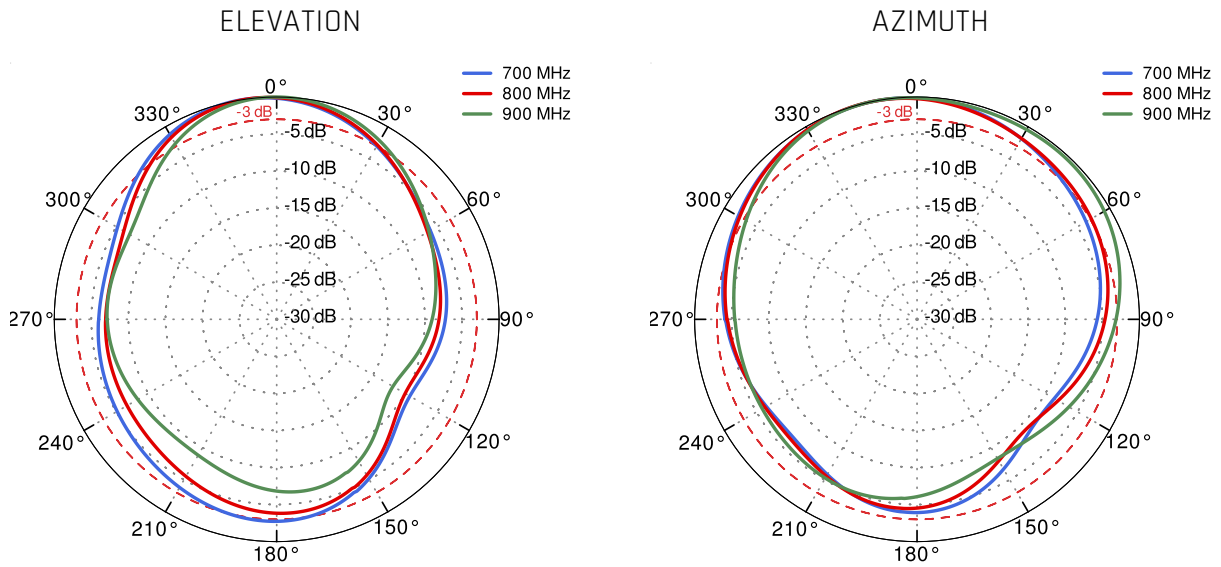
Gain for LTE antenna



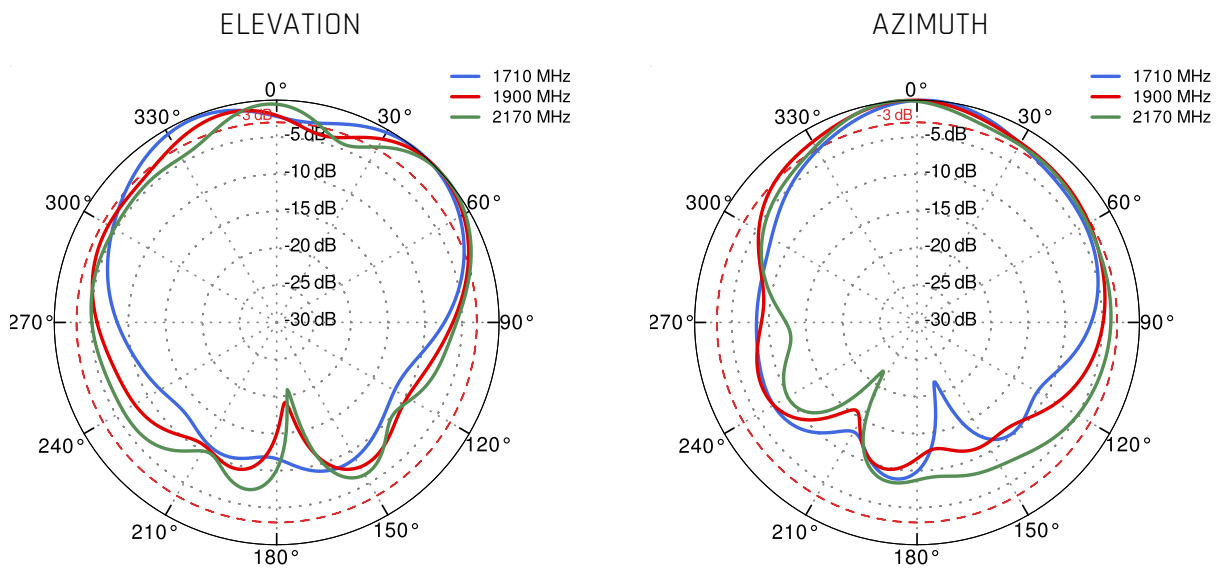
Gain for Wi-Fi antenna



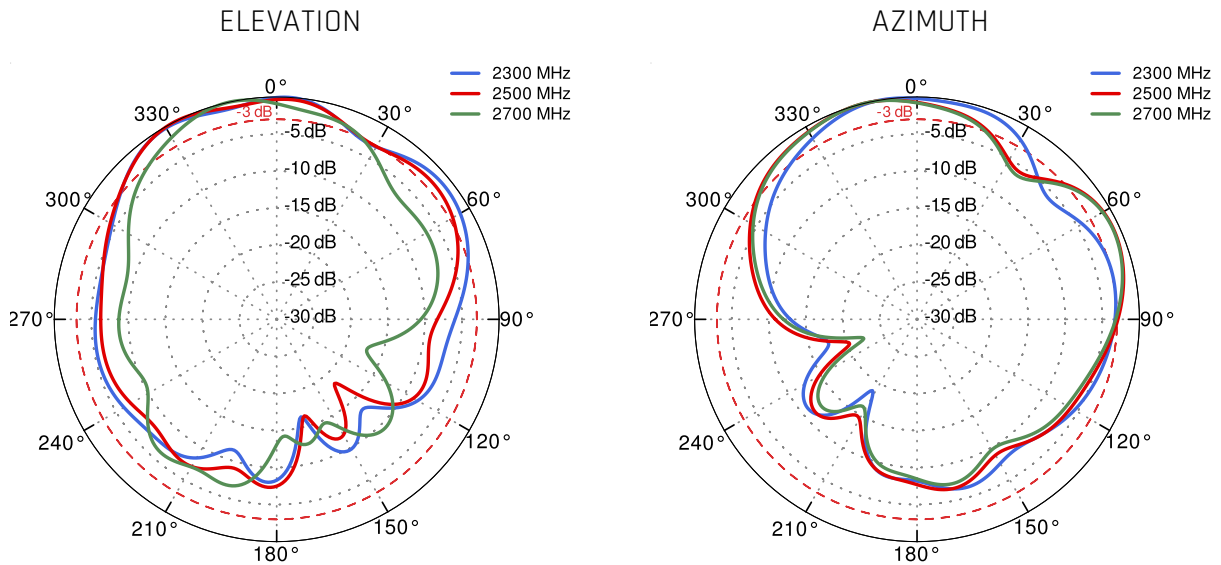
LTE from 700MHz to 900MHz



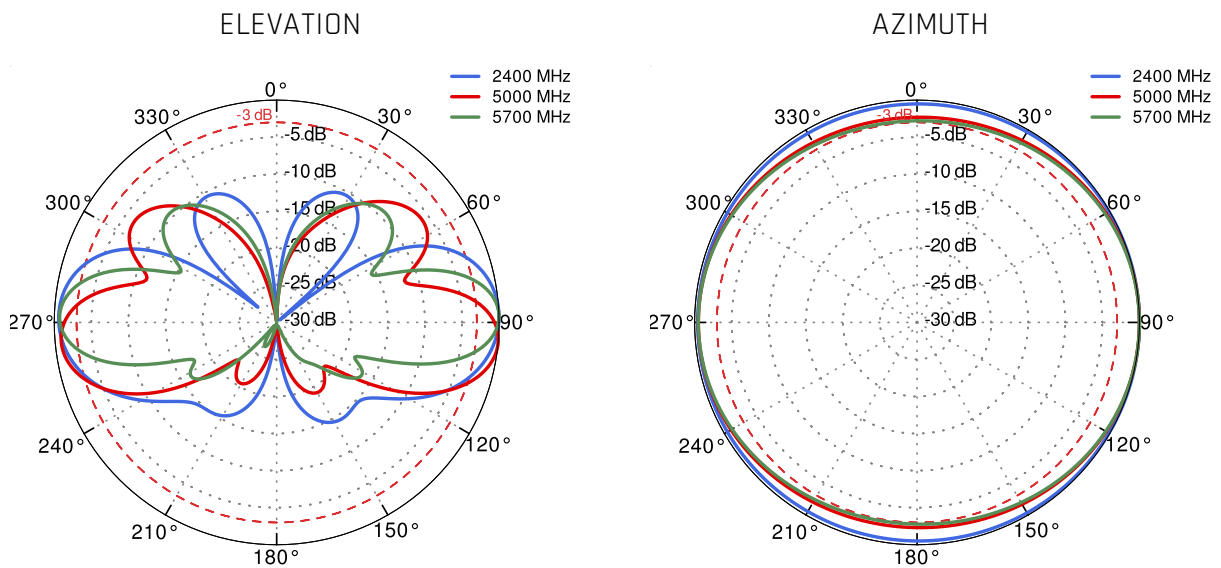
LTE from 1.71GHz to 2.17GHz



LTE from 2.3GHz to 2.7GHz



Wi-Fi 2.4GHz and 5GHz



DIMENSIONS

